

## INSTRUCTIONS MANUAL

### ⚠ WARNING

- **IMPROPER USE CAN RESULT IN SERIOUS INJURY**
- Before using the Switch Thru Axle, read the instructions and consult your local dealer if you have any questions.

#### Installing the axle

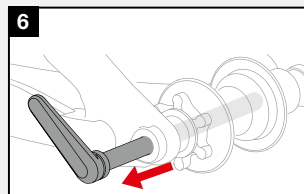
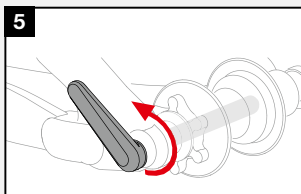
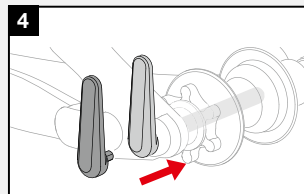
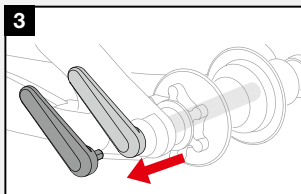
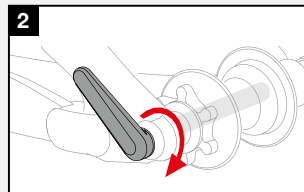
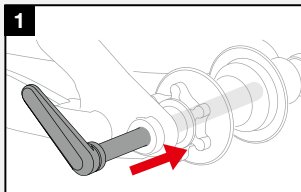
1. Align the hub and slide the thru axle through the frame and hub.
2. Turn the thru axle clockwise with Switch Lever or 6mm hex wrench to tighten with 10-12Nm of force.

#### Setting the lever angle

3. If using a Switch Lever, you can pull it out and reposition as desired.
4. Fully reinsert the lever in the thru axle. It will not fall out while riding.

#### Removing the axle

5. Turn the lever or 6mm hex wrench counter-clockwise
6. When axle is unthreaded, pull the thru axle out completely and the wheel can be removed from the frame.



### CONTACT

STEVENS Vertriebs GmbH

Asbrookdamm 35

D-22115 Hamburg

www.stevensbikes.de // info@stevensbikes.de

### SAFETY INSTRUCTIONS

**BEFORE RIDING:** Before every ride, check that the thru axles are securely tightened with sufficient force and the wheels are firmly fixed in the frame. To check if the axles are correctly installed, lift the bike off the ground and give a sharp blow to the top of the tire. The wheel should not move or come out. If it does, repeat installation or take the bike to your local bicycle dealer for assistance.